

SHRINK PACKER - type Innopack Kisters SP 050 B2

- 1 of used „Film-Only“ shrink packer
- make KHS
- New 2013.
- Operating side: left.
- Quick change-over machine (via servos and spindles)



More infos

- 1) Equipment is in excellent condition (other than minor lift-out damage to shrink tunnel and buckled inline infeed conveyor). Has been out of operation since mid 2019, so in effect it only ran for 6 years.
- 2) Equipment is located in our warehouse.
- 3) If of serious interest, we would advise an inspection visit asap.
- 4) As the previous owner packed square-round bottles, he used a laner in front of this machine.

We have that laner, as well as a segment of transfer conveyor available, however wires were clipped and have been stored outdoors since 2019 – albeit under tarping.

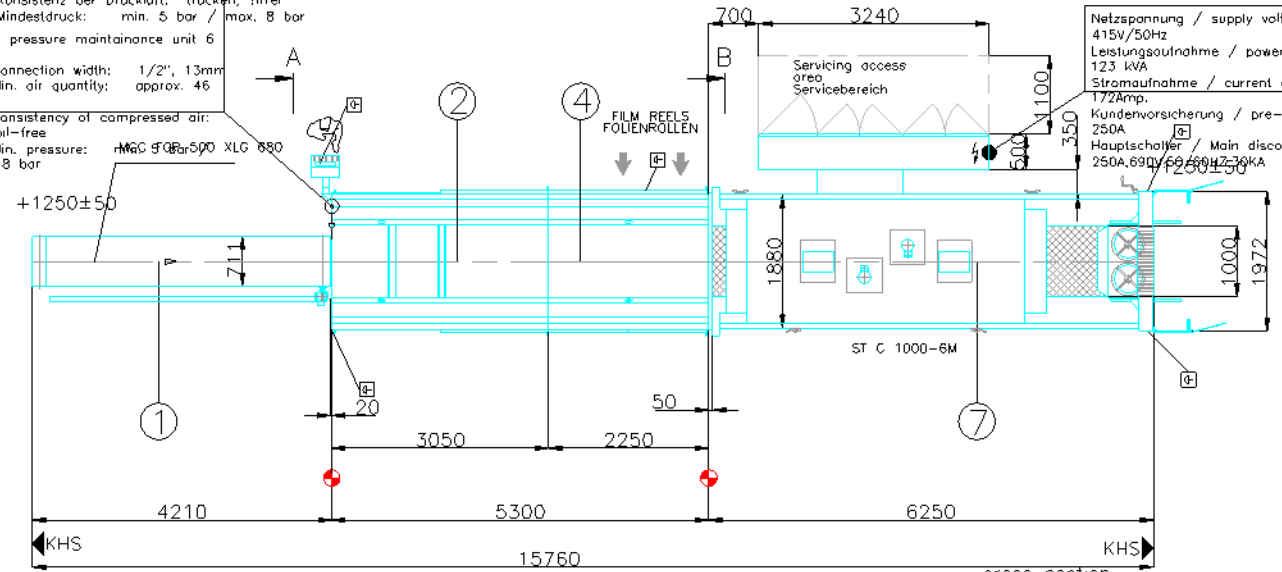
Available at additional cost – to be discussed.



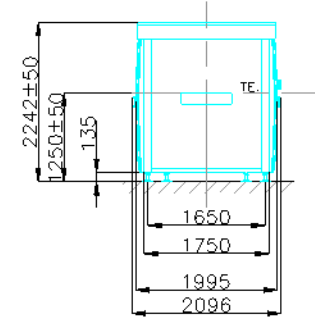
Wartungseinheit Eingangsdruck 6 bar
 - Anschlußweite: 1/2", 13mm
 - Min. Luftmenge: ca. 46 m³/h
 - Konsistenz der Druckluft: trocken, ölfrei
 - Mindestdruck: min. 5 bar / max. 8 bar

Infeed pressure maintenance unit 6 bar
 - Connection width: 1/2", 13mm
 - Min. air quantity: approx. 46 m³/h
 - Consistency of compressed air: dry, oil-free
 - Min. pressure: min. 5 bar / max. 8 bar

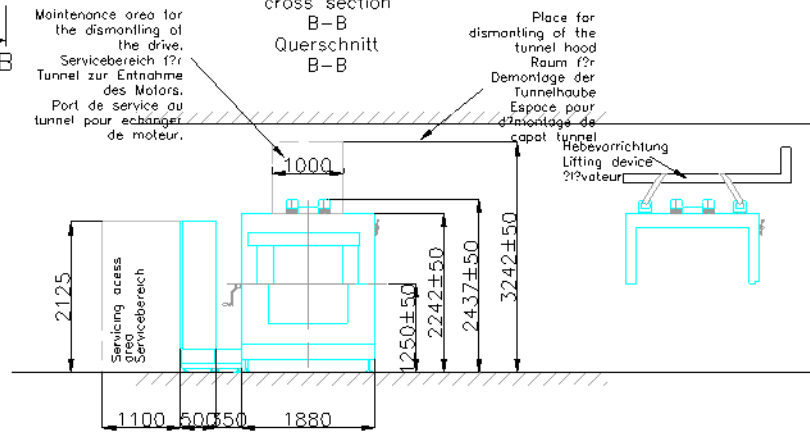
Netzspannung / supply voltage: 415V/50Hz
 Leistungsaufnahme / power input: 123 kW
 Stromaufnahme / current consumption: 172Amp.
 Kundenvorsicherung / pre-fusing by customer: 250A
 Hauptschalter / Main disconnect switch: 250A, 690V, 60kA, 4P, 30kV



cross section A-A
 Querschnitt A-A



cross section B-B
 Querschnitt B-B



min. room height/hauteur min. de la salle 3500±50